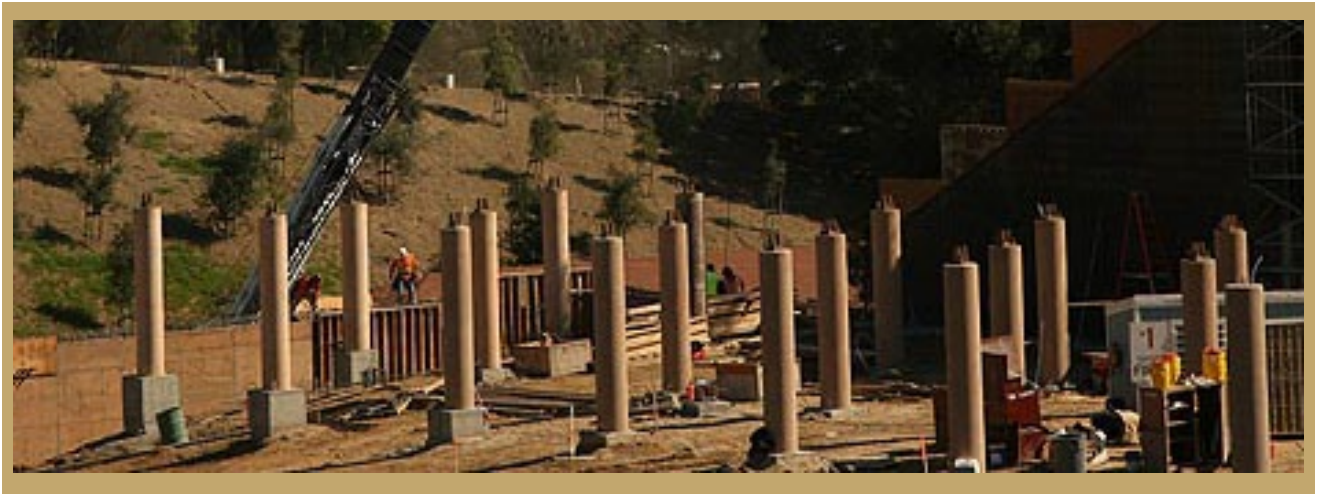


# One Piece Round Column Forms

## Molded Fiber Glass CP



MFG one-piece round column forms (RCFs) are economical, and produce a smooth concrete finish. Manufactured of fiberglass reinforced plastic, these forms will not dent, sag, rot or weather and they require little, in any maintenance.

MFG Round Columns Forms (RCFs) are lightweight, easy to handle, and simple to setup and remove. MFG RCFs have only one vertical seam and are supplied complete with bracing collars and “fast” bolts. MFG RCF’s are designed for repeat use.

MFG RCF’s are nest able thus requiring less storage and shipping space. Diameters from 12 to 48 inches are available in one-piece lengths up to 20 feet. RCF’s can be rented or purchased.

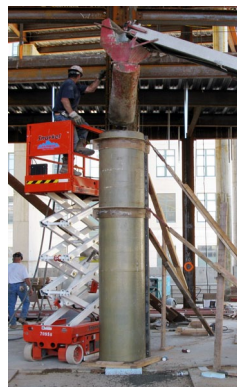
### Suggested Specifications:

One-piece fiberglass reinforced plastic round column forms, manufactured by Molded Fiber Glass CP, have a single vertical seam and smooth interior surface.

Setup



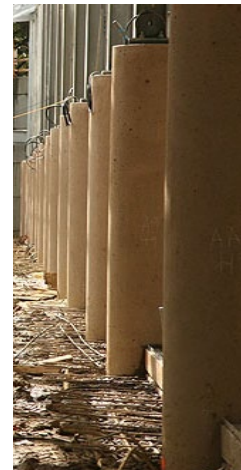
Fill



Removal

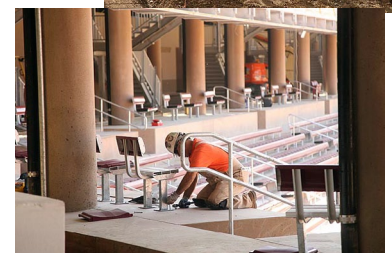
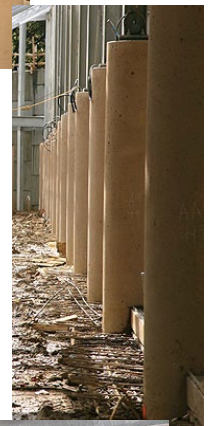


Finished



# US Units

Column Diameter Inches	Maximum Length Feet	Approx. Wt Per Lineal Feet lbs.	Approx. Vol. of Concrete Per Linear ft. cubic ft.
12	20	9.8	.08
14	20	10.0	1.0
16	20	11.1	1.4
18	20	12.3	1.8
20	20	13.1	2.2
22	20	14.2	2.6
24	20	15.2	3.1
26	20	16.2	3.6
28	20	17.3	4.2
30	20	18.4	4.9
32	20	19.5	5.5
34	20	20.5	6.3
36	20	21.5	7.0
28	20	22.5	7.9
40	20	23.7	8.7
42	20	24.8	9.6
44	20	25.8	10.6
46	20	26.8	11.5
48	20	27.9	12.6



Maximum lateral pressure should not exceed 2,250 psf. Maximum rate of fill is:  
 At 90 °F: 20 ft. per hour    At 80 °F: 18 ft. per hour    At 70 °F: 6 ft. per hour  
 At 60 °F: 14 ft. per hour    At 50 °F: 11 ft. per hour    At 40 °F: 9 ft. per hour

# SI Units

Column Diameter, millimeters	Max Length meters	Approx. Wt Per Lineal Meter kilogram/meter	Approx. Vol. of Concrete Per. Lineal Meter cubic meters/meter
304.8	6.096	14.760	0.0743
355.6	6.096	14.913	0.0929
406.4	6.096	16.553	0.13
457.2	6.096	18.340	0.167
508.0	6.096	19.536	0.2044
558.8	6.096	31.176	0.2415
609.6	6.096	22.667	0.288
660.4	6.096	24.160	0.334
711.2	6.096	25.800	0.39
762.0	6.096	27.44	0.455
812.8	6.096	29.08	0.51
863.6	9.096	30.57	0.585
914.4	6.096	32.06	0.65
965.2	6.096	33.70	0.734
1016.0	6.096	35.34	0.808
1066.8	6.096	37.00	0.8918
1117.6	6.096	38.475	0.9814
1168.4	6.096	40.00	1.068
1219.2	6.096	41.60	1.17

Maximum lateral pressure should not exceed 108,000 pascals. Maximum rate of fill is:  
 At 32.2 °C: 6.0963 m. per hour    At 26.7 °C: 5.486 m. per hour    At 21.1 °C: 4.877 m. per hour  
 At 15.5 °C: 4.267 m. per hour    At 10.0 °C: 3.353 m. per hour    At 4.4 °C: 2.743 m. per hour